

BOX-CITY

Urban Design

Spring 2020 | Hilliard Art Museum - University of Louisiana at Lafayette

Grades K - 2



Your Name: _____

The Name of your Box-City: _____

Urban Design

What does an urban designer do?

Urban Designer: someone who plans and creates cities and other spaces where people live

Urban: any place where people live; a city or town

Community Wants and Needs



Models and Scale



1 ft = 1 ft



6 in = 1 ft



1/2 in = 1 ft

Scale Model: a copy or representation of an object that is larger or smaller than the object

What did you learn from each model?

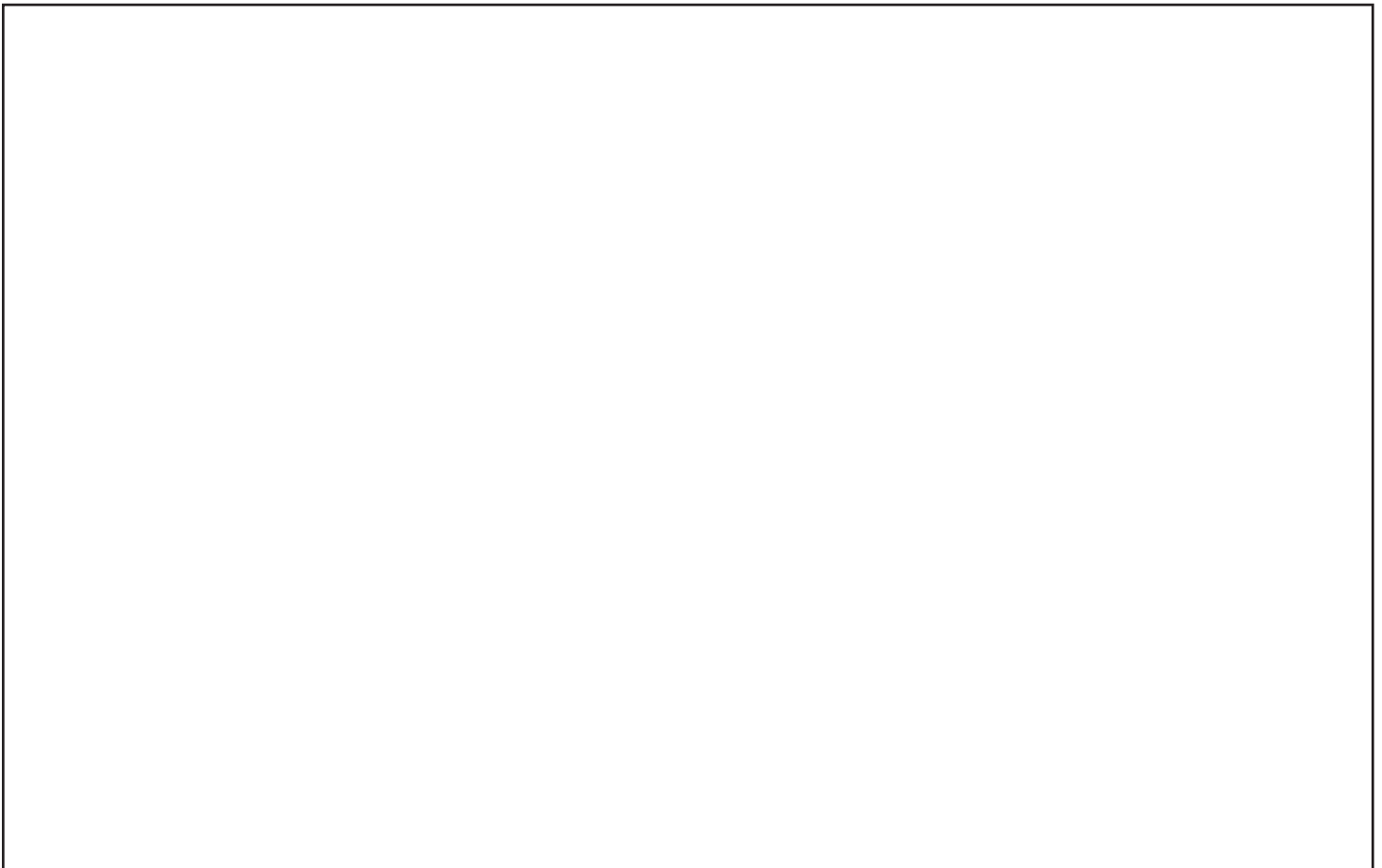
What do you think it would be like to live in the 8' x 8' living unit? How many people do you think can live in that space?

Building BOX-CITY

City Building Code:

- Each box must have an exterior doorway
- Everyone in the city's population must have a living space
- No more than two people living in each unit
- Before moving a box, make sure the path is clear
- Limit construction projects to one level

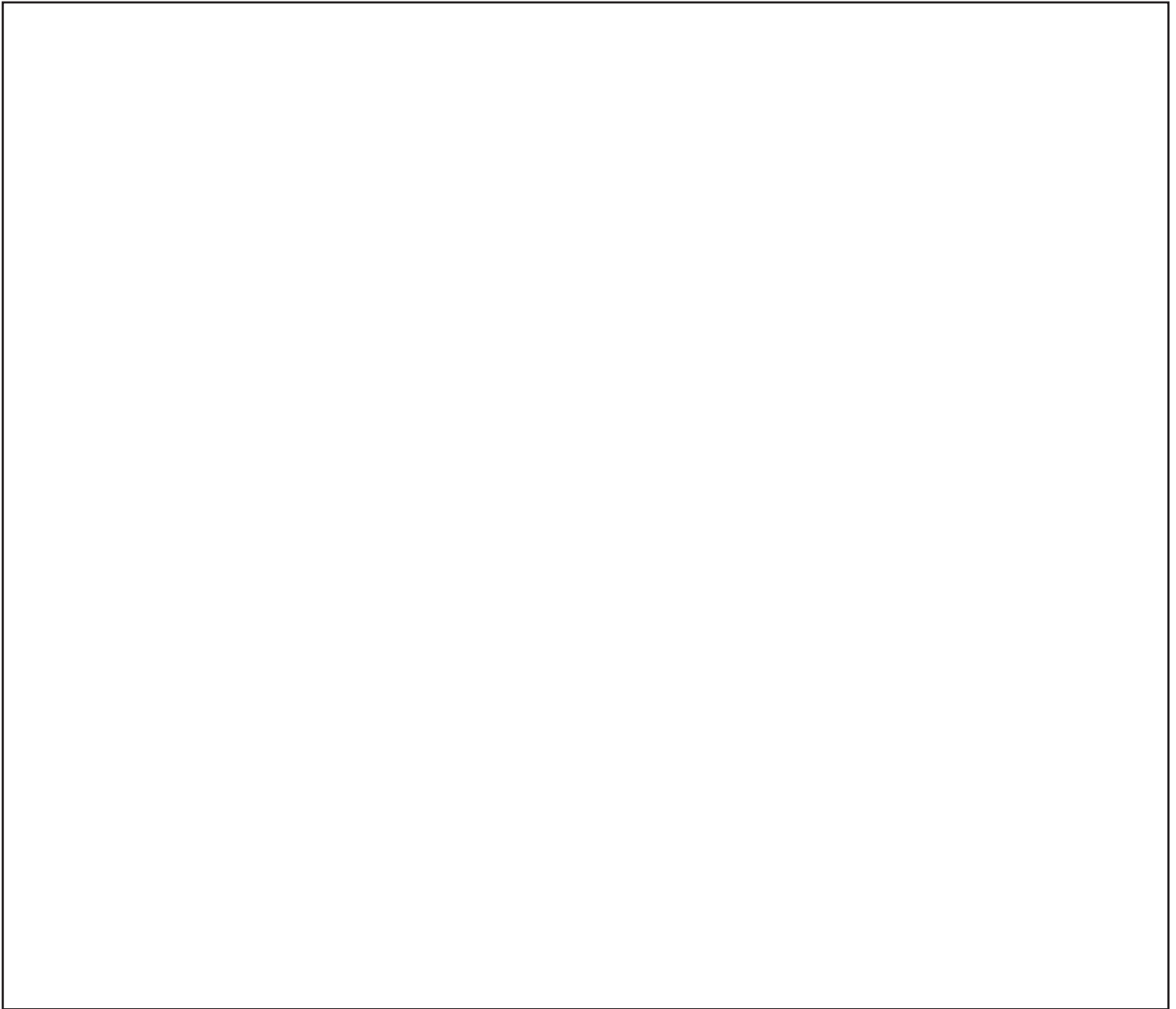
Building Challenge 1 Draw your BOX-CITY.



How does your BOX-CITY meets the needs of your community?

Adaptable: able to adjust to changes or new conditions

Building Challenge 2 Draw your adapted BOX-CITY.



How did your city adapt?

Flows and Zones in a Community

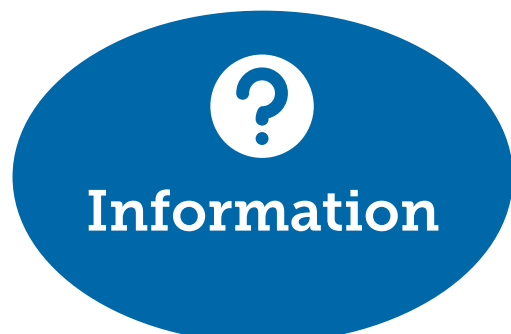
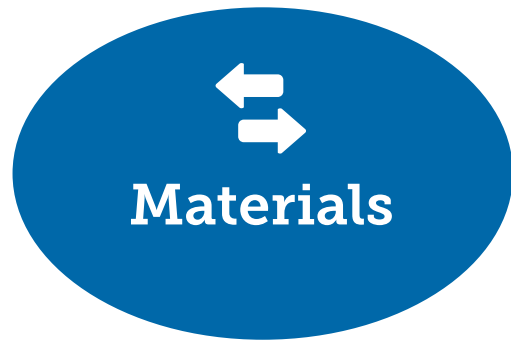
Patch Dynamics: an approach ecologists use to study and map patterns in the landscape of an ecosystem

Flow: movement of people or things through a community

Zone: a section of a city that is created for a particular use

Chose one flow example and diagram how it moves across different zones and patches

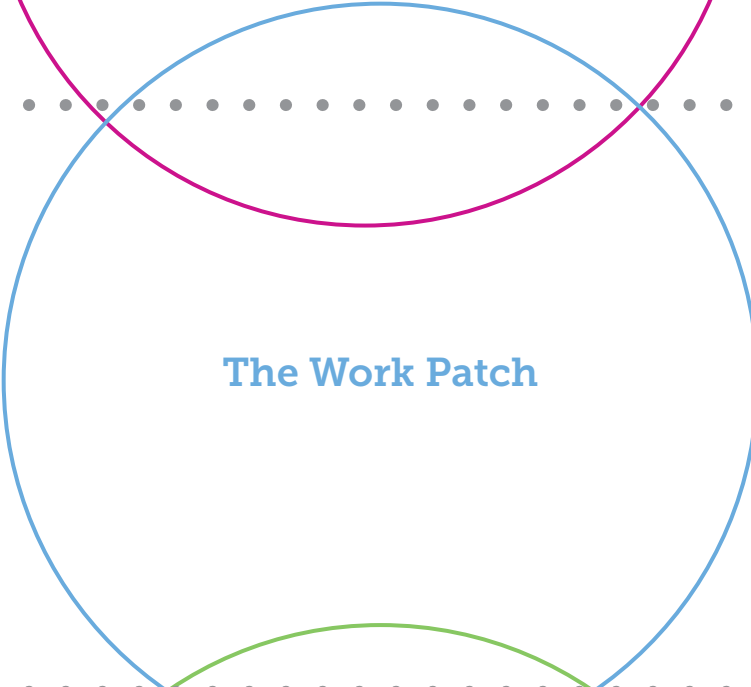
Flows





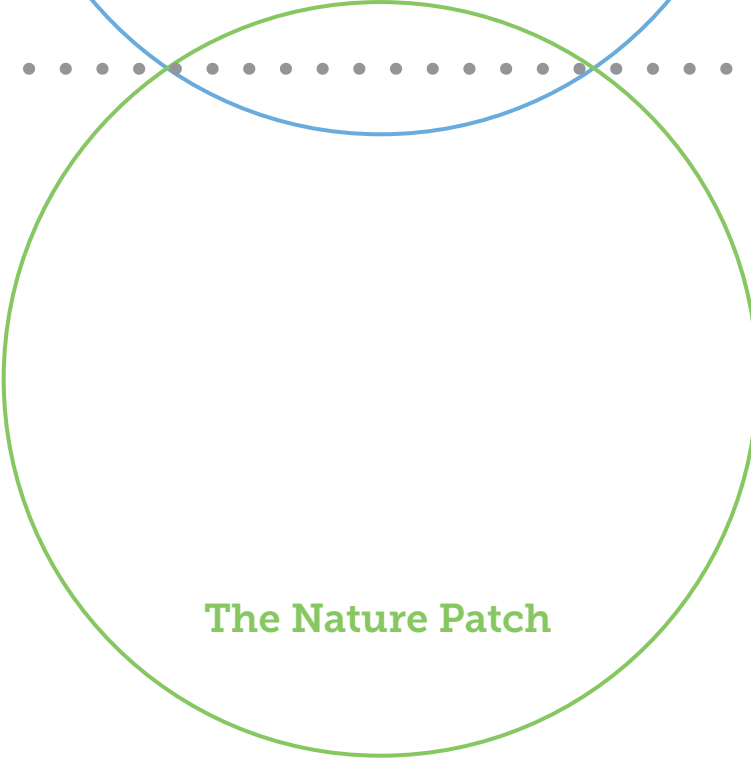
The Play/Meet Patch

Zone 3



The Work Patch

Zone 2



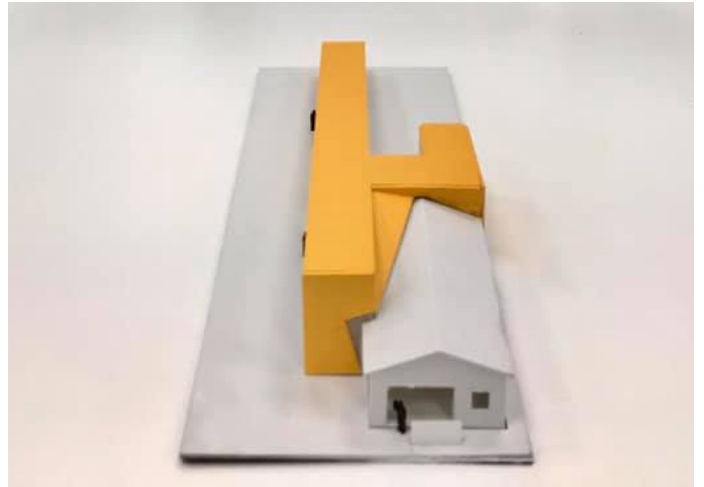
The Nature Patch

Zone 1

Case Study: West End District, New Iberia, LA



1/ 16 in = 1 ft



1/ 16 in = 1 ft

Building Challenge: Design a city lot that meets the needs and wants of the community.

Circle the colors of your assigned zones.



Tell Us What You Think.

Which model or idea do you think would improve the community the most? Write or draw your thoughts on a sticky note and leave it next to the model.



Post-Visit Activity:

Design Challenge: Four-Block Neighborhood

On the sticky notes below, draw a design for four city blocks. Each block can have four buildings and/or types of green spaces. Each lot is zoned by color (Follow the diagram on the opposite page.) Make sure that you build things in the appropriate zones.

